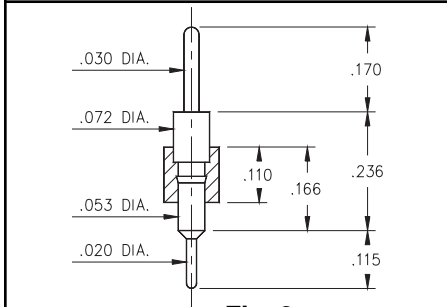
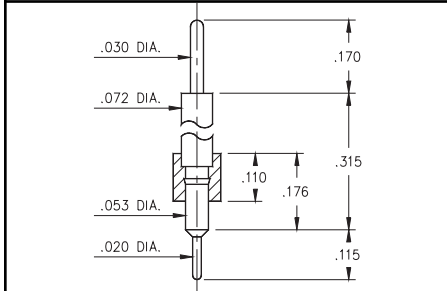


**Fig. 1**

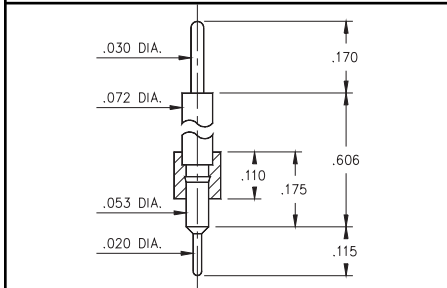
- Series 334 Interconnect strips come in five lengths.  
 L = .190"  
 L = .236"  
 L = .315"  
 L = .606"  
 L = 1.080"  
 (M-M# 3402, 3401, 3405, 3400 & 3410. See page 173 for details).
- Strips come with .020" pluggable solder tails at one end and .030" tails at the other.



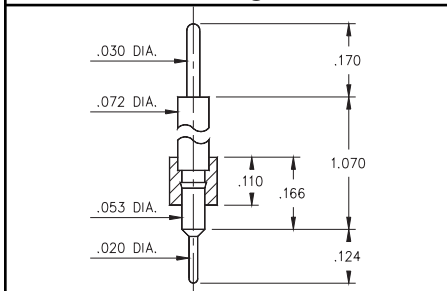
**Fig. 2**



**Fig. 3**



**Fig. 4**



**Fig. 5**

**Ordering Information**

<b>Fig. 1</b>	<b>Series 334...020</b> <b>.020 / .030 Solder Tails</b>
	334-XX-1__-00-020 Specify # of pins      ↪      01-64
<b>Fig. 2</b>	<b>Series 334...010</b> <b>.020 / .030 Solder Tails</b>
	334-XX-1__-00-010 Specify # of pins      ↪      01-64
<b>Fig. 3</b>	<b>Series 334...050</b> <b>.020 / .030 Solder Tails</b>
	334-XX-1__-00-050 Specify # of pins      ↪      01-64
<b>Fig. 4</b>	<b>Series 334...000</b> <b>.020 / .030 Solder Tails</b>
	334-XX-1__-00-000 Specify # of pins      ↪      01-64
<b>Fig. 5</b>	<b>Series 334...100</b> <b>.020 / .030 Solder Tails</b>
	334-XX-1__-00-100 Specify # of pins      ↪      01-64

*XX= Plating Code  
See Below*

SPECIFY PLATING CODE XX=	<b>10</b>	<b>90</b>		
Pin Plating	10μ" Au	200μ" Sn/Pb		